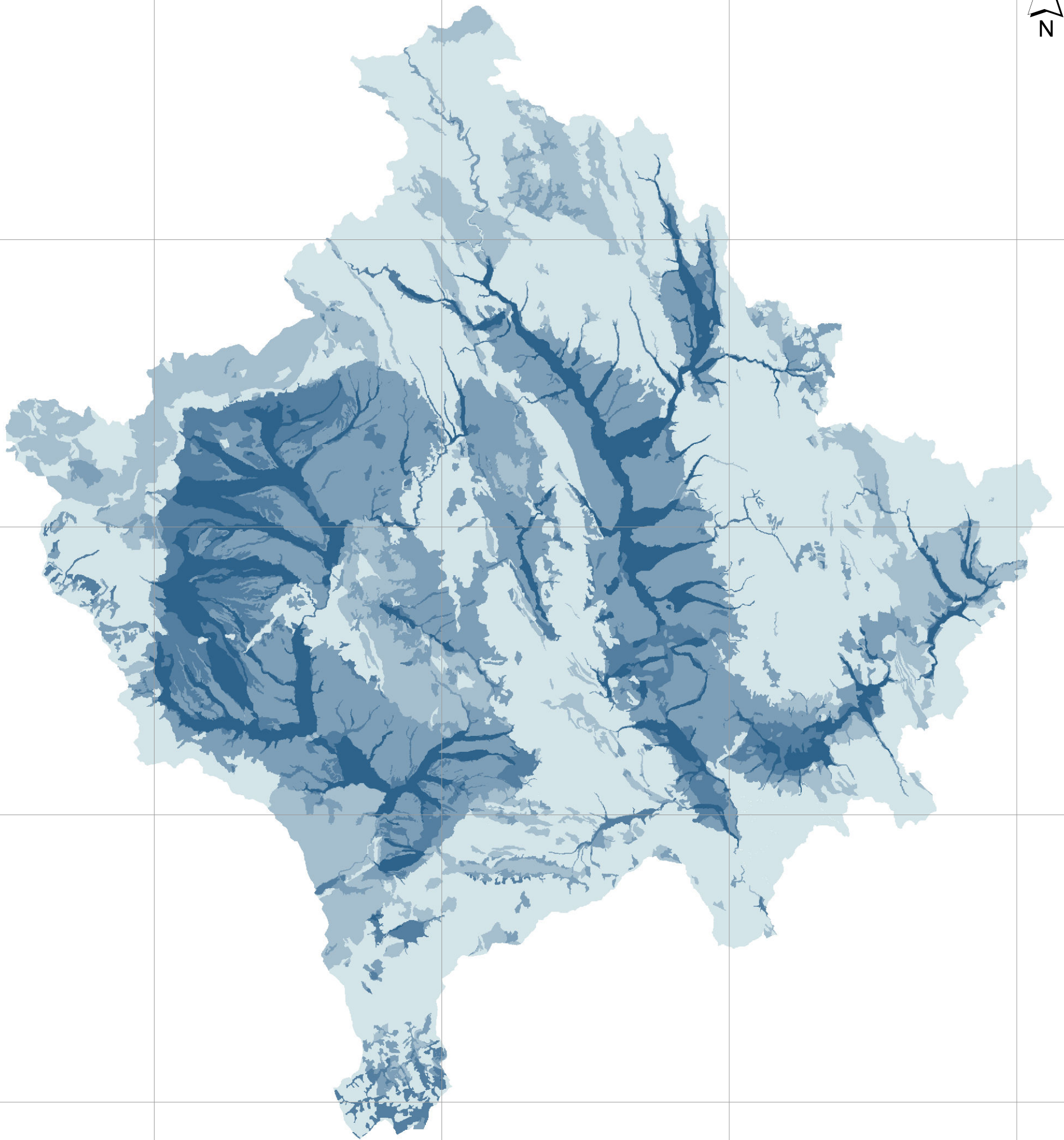


Groundwater Sensitivity to Pollution



Data holder: Ministry of Agriculture, Forestry and Rural Development
 Contacts: Fetije Muriqi, GIS sector, MAFRD, Mother Teresa st. 35, Pristina, +38138211128
 Data holder: Ministry of Environment and Spatial Planning
 Contacts: Riza Murseli, GIS sector, MESP, Luan Haradinaj st. Pristina, +37744740534
 Produced by: EULUP project: B. Duke, N. Nordin, E. Krasniqi, M. Kuka.
 Date: 2011
 Reference system: KosovaRef
 Map projection: Gauss_Kruger
 GCS_ETRS_1989
 Datum: D_ETRS_1989
 Data used (for all maps of data base):
 Soil Atlas (1974),
 The Yugoslav climate map (Water Master Plan 1983)
 Digital Terrain Model (DTM) of Kosovo (KCA 2004), 20 m resolution- resembled to 50m
 Digital Terrain Model (DTM) of Kosovo, SRTM data was downloaded from CIGAR
 (<http://srtm.csi.cgiar.org/>), 83 m resolution resembled to 50m
 CORINE Land Cover (2006)
 Hydrogeological Map (ICMM 1981)
 Housing density (StatGIS, based on Census of 2008)
 Mining hazards, Priority mining areas, Exploitation sites, Quarries (ICMM KMRMP - 2009)
 Nature conservation areas, Culture heritage (ICMM KMRMP - 2009), (ISP)
 Irrigated Areas (RBMP and EULUP projects)
 Water springs, Rivers, Water Reservoirs (ICMM KMRMP - 2009), (ISP)
 Roads, Villages, Towns (ICMM KMRMP - 2009), (ISP)

Legend

Groundwater Sensitivity

- Very Low 0 - 20
- Low 20.1 - 40
- Medium 40.1 - 60
- High 60.1 - 75
- Very High 75.1 - 100

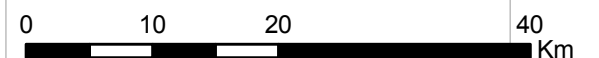
The map is produced in the framework of the EU funded project "Further Support to Land Use" (EULUP), which is managed by the ECLO and is implemented by the consortium comprising of GFA Consulting Group GmbH (lead), BVVG of Germany, and DLG of the Netherlands (2010 - 2012).



An EU funded project managed by the European Commission Liaison Office

Implemented by:

1:600,000



7440000

7480000

7520000

7560000

4800000

4760000

4720000

4680000

4640000

4600000

4800000

4760000

4720000

4680000

4640000

4600000